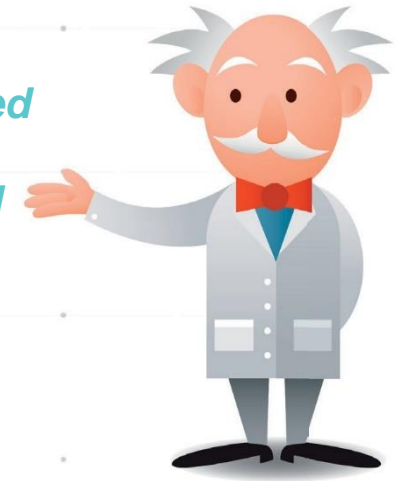


# EPFL “Mini Tray” Table

## Kuhner EquipNote

by Kuhner shaker

Our EPFL Table is recommended for customers operating at or near our maximum weight and shaking speed specification



### Tube and MTP Work – Potential Inefficiencies

In a typical shaker incubator, efficient flask work has always been a relatively straightforward process. Flasks are easily added and removed from the shaking platform using a flask clamp system or with an even more flexible sticky mat solution. On the other hand, when shaking centrifuge tubes or microtiter plates, a traditional shaking platform can introduce inefficiencies into your workflow. In this case you are typically left with two options:

**Option 1** – Removing individual tubes or microtiter plates from the shaker incubator. This results in multiple trips back and forth to your BSC/bench or having the need to transfer your tubes to and from a secondary rack system, depriving your cells of oxygen in the process. This also results in multiple incubator door openings or the need to leave the door open for extended periods of time.

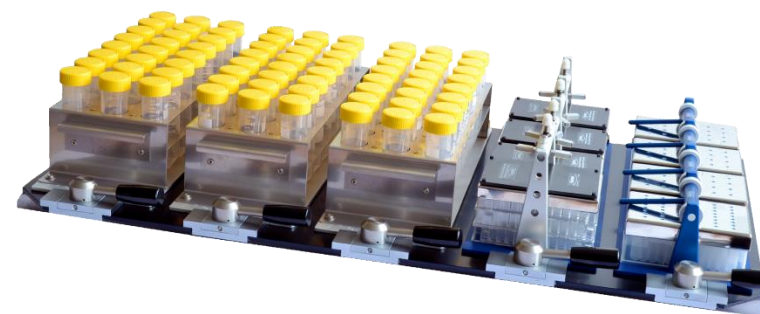
**Option 2** – Remove an entire tube rack or MTP clamp. Unfortunately, in a traditional system, this would mean unscrewing these accessories from your tray or having to remove the full-sized tray altogether. This also results in a less-than-optimal amount of time spent with the door open.

### Kuhner’s Solution

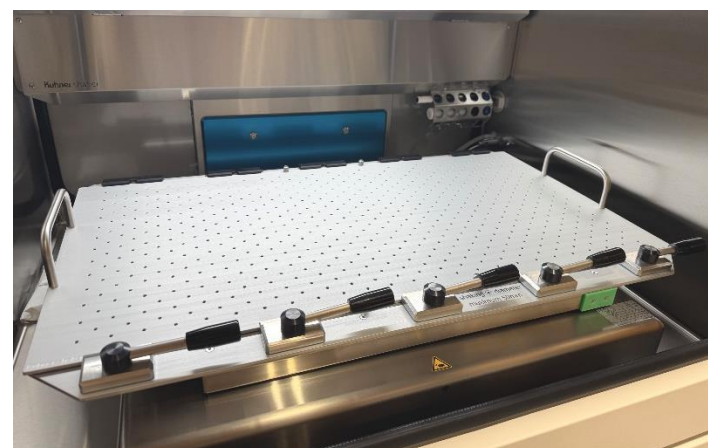
Kuhner’s EPFL Table improves on the second option, allowing you to remove and reinstall an entire rack of tubes or a full MTP clamp in a matter of seconds. Our “mini tray” divides our traditional table into anywhere from three to five sections, each with its own quick-release clamp. Not only does this mean you’re quickly in and out of your incubator, but it also gives you the flexibility to reconfigure your shaken vessel arrangement on the fly. Even better, you can continue to use our standard-sized universal or sticky mat trays to seamlessly transition back to flask work as needed.



Kuhner’s EPFL mini tray system with either three, four or five independent quick-release clamp sections

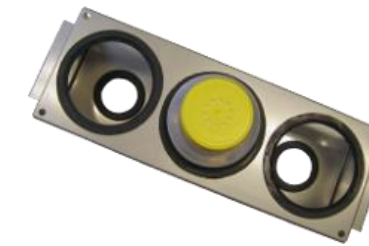


Combine and quickly reconfigure any of Kuhner’s EPFL compatible accessories



Easily set up your table for flask work with a full-size universal or sticky mat tray

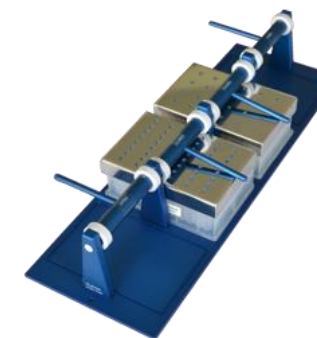
### Kuhner EPFL Table Accessories



Traditional and pin-style rack for 600mL TPP TubeSpin Bioreactors



Single layer and adjustable clamps for stacking MTPs



Rack for 24x 50mL conical tubes



Plate with sticky mat for small flask work



Mini universal tray with pin clamps for small flasks/bottles